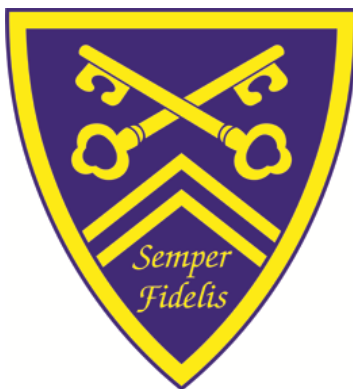




HAGLEY CATHOLIC HIGH SCHOOL



Uniform Policy

Version	1
Date created/updated	30/04/2020
Ratified by	<i>E. M. Yates</i>
Date ratified	07/07/2020
Date issued	08/07/2020
Policy review date	October 2021
Post holder responsible	Assistant Principal: Behaviour and Attitudes

Semper Fidelis – “Always Faithful”
In Jesus we live learn and serve

Together we are committed to excellent education for all rooted in Gospel values, inspiring a love for life-long learning and following the compassion of Christ.

Rationale

Hagley Catholic High School holds high expectations and standards for all students. We encourage a professional environment, preparing our young people for the world of work and employability.

As a school, we have a long-standing reputation in the local community for being an establishment that is well respected for our standards. It is a requirement therefore that all of our students wear their uniform as directed within this policy and in turn are encouraged to wear it with pride marking their distinct identity as part of the Hagley Catholic High School community.

As a school that promotes both professional conduct and presentation, we do not believe that 'fashion' or 'trends' should influence the school uniform. The wearing of uniform removes opportunities for peer pressure and bullying. All students are dressed to the same professional standard. Although the initial expense of a school uniform may be costly over time it is more affordable, avoids conflict and it is more manageable both for the students and their parents.

Monitoring

Students and the wearing of the School Uniform correctly is the responsibility of all members of the school community – students, parents and staff. This policy will be used by all staff in conjunction with the school's [Positive Behaviour for Learning Policy](#) as well as both the schools [Reward](#) and [Sanctions Policies](#). Staff are required to reinforce the school's uniform requirements throughout all aspects of their daily tasks, through both the use of rewards and sanctions where necessary.

All form tutors will check that student uniform is correct at the start of the day and then staff will continue to monitor that standards are being maintained as the day progresses. Students can expect to be challenged if they fail to adhere to the school's Uniform Policy. Any member of staff (teaching or non-teaching) is empowered to reinforce the expected standards of uniform whilst a student is representing Hagley Catholic High School and can therefore allocate either rewards or sanctions dependant on the need. The reporting of persistent uniform issues by staff, will require liaison with the students Head of Year who will act to resolve the issues and issue further sanctions if necessary.

If there are deemed to be extreme or more serious challenges of the uniform policy, or repeated offences after several attempts to rectify the problem, then the school may choose to opt for more significant interventions to initiate the required change in behaviour.

Students can be allocated 'zero-free time' or even be kept under SLT supervision. Examples (non-exhaustive) of when these sanctions may occur include –

- Extreme haircuts (full or partial shave; lines, unnatural colour)
- Incorrect footwear (usually to wearing of trainers)
- Piercings (only a single 4mm plain stud in each ear lobe is allowed)
- Refusal to cooperate when directed to rectify a uniform issue by a member of staff

The Principal, acting on behalf of the Governing body, will have the final say on any ongoing uniform discrepancies and students not conforming to the required uniform expectations. Any student not willing to resolve any identified issues, may well be sent home to change or will be supervised by SLT within school.

However, our primary aim will always be to rectify any identified issues as soon as possible. Therefore, staff and parents/carers will work together to support the student to solve any issues within an acceptable

time phase. In some cases, as a school, we may either look to lend items of uniform (specifically for PE) or alternatively, parents/carers may choose to bring correct items into school in order for students to return to normal as soon as possible.

Students, parents/carers and staff should also read this policy in conjunction with the school's [Screening, Searching and Confiscation Policy](#), as any items not permitted by this Uniform Policy will be confiscated if present in school.

Agreement and Communications

All of our students are ambassadors for themselves, their families and our community when they are in school and out in the public eye. Therefore, all students from Hagley Catholic High School have a responsibility to present themselves in line with the direction and expectations outlined within this Policy. The wearing of school uniform is an essential requirement and should be worn correctly to and from school as well as in and around school, at all times.

We ask for and expect the full support of parents/carers in maintaining a high standard of dress and presentation from all students attending Hagley Catholic High School. From time to time, certain items of uniform might get misplaced or need replacing. If this is the case, we request that communication is made with the school office immediately to inform us and that an acceptable timescale is set for when the issue will be replaced.

Students will be informed about uniform expectations through assemblies and tutor time presentations. These expectations will then be reinforced via the student organiser and all classroom teachers. Parents/carers will be informed of the uniform expectations at the Year 6 Transition events and via the School website; Principals newsletters; the student organiser and at parent information evenings.

Girls Uniform Requirements

BASIC	REQUIREMENTS	GUIDANCE
Blazer	Navy blue blazer with school badge.	To be worn at all times.
Shirt	A plain white short sleeved blouse with tie or plain white short sleeved shirt with revered collar (summer)	To be tucked in at waist. Top button to be done up.
Tie	Key stage appropriate tie (Yr7,8,9 and Yr10,11).	To be worn at all times.
Skirt	Plain navy-blue KNEE LENGTH skirt.	MUST be worn to the knee. No Lycra or side slits.
Trousers	Mid grey, tailored full-length trousers.	No black trousers. No Lycra.
Tights	Plain navy blue or black opaque tights.	No socks to be worn over. tights at any time.
Shoes *	Sensible black shoes with low heels and black laces if required.	No boots/no sport brands/ no trainers/no canvas shoes.
Slides	Plain hair slides or navy-blue ribbons are allowed.	No alternative colours.
ADDITIONS	REQUIREMENTS	GUIDANCE
Jumper	Plain 'V' necked navy-blue jumper with school badge.	No alternatives permitted.
Coat	Plain dark coloured (preferably navy or black) coat.	No colour deviations. No denim or sport stripes.
Scarf	School design or plain navy or black scarves.	No alternative colours. Not to be worn inside.
Hat/Gloves	Plain navy or black gloves and hats.	No alternative colours. Hats not to be worn inside.
Belts	Belts must be plain black.	No colour deviations. No decoration or studs.
Bags	Bags of sensible size and design.	
Apron	Separate apron's required for D&T and Food Tech.	
PE	REQUIREMENTS	GUIDANCE
Outdoor top	Navy blue and gold outdoor top embroidered with the school crest.	Must have school crest. Embroidered name needed.
Polo top	White polo top embroidered with the school crest.	Must have school crest. Embroidered name needed.
Shorts / Leggings	Plain navy-blue shorts or school issue sports leggings.	Embroidered name needed. No sport branding.
Skort	Navy-blue skort embroidered with the school crest.	Must have school crest. Embroidered name needed.
Trainers	Sports trainers.	No pumps. None marking soles required
Outdoor socks	Navy blue and gold football/hockey socks.	
Indoor socks	White sports socks.	
Boots	Football boots with moulded, studs or blade sole.	Legal requirement.
Shin Pads	Shin pads needed for any football session.	Legal requirement.
Hair band	Hair to be held back with a band for all PE lessons.	Neutral in colour.

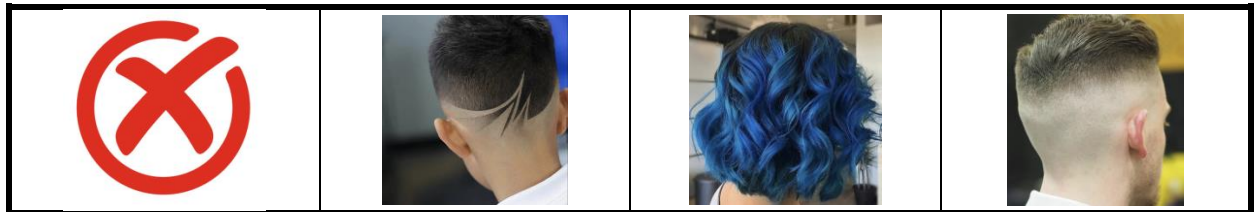
Boys Uniform Requirements

BASIC	REQUIREMENTS	GUIDANCE
Blazer	Navy blue blazer with school badge.	To be worn at all times.
Shirt	Plain white shirt. Short sleeve in the summer if required.	To be tucked into trousers. Top button to be done up.
Tie	Key stage appropriate tie (Yr7,8,9 and Yr10,11).	To be worn at all times.
Trousers	Plain mid to dark grey, full-length tailored trousers.	No black trousers. No jeans.
Socks	Plain navy blue, dark grey or black socks.	No white socks. No multicolour socks.
Shoes *	Black shoes with black laces (if required).	No boots/no sport brands/ no trainers/no canvas shoes.
ADDITIONS	REQUIREMENTS	GUIDANCE
Jumper	Plain 'V' necked navy-blue jumper with school badge.	No alternatives permitted.
Coat	Plain dark coloured (preferably navy or black) coat.	No colour deviations. No denim or sport stripes.
Scarf	School design or plain navy or black scarves.	No alternative colours. Not to be worn inside.
Hat/Gloves	Plain navy or black gloves and hats.	No alternative colours. Hats not to be worn inside.
Belts	Belts must be plain black.	No colour deviations. No decoration or studs.
Bags	Bags of sensible size and design.	
Apron	Separate apron's required for D&T and Food Tech.	
PE	REQUIREMENTS	GUIDANCE
Outdoor top	Navy blue and gold outdoor top embroidered with the school crest.	Must have school crest. Embroidered name needed.
Polo top	White polo top embroidered with the school crest.	Must have school crest. Embroidered name needed.
Shorts	Plain navy-blue shorts.	Embroidered name needed. No sport branding.
Outdoor socks	Navy blue and gold football/hockey socks.	
Indoor socks	White sports socks.	Not to be worn as part of the uniform after PE.
Trainers	Sports trainers.	No pumps. None marking soles required
Boots	Football boots with moulded, studs or blade sole.	Legal requirement. No astro-trainers
Shin Pads	Shin pads needed for any football session.	Legal requirement. Slip in pads are fine.

Additional Guidance

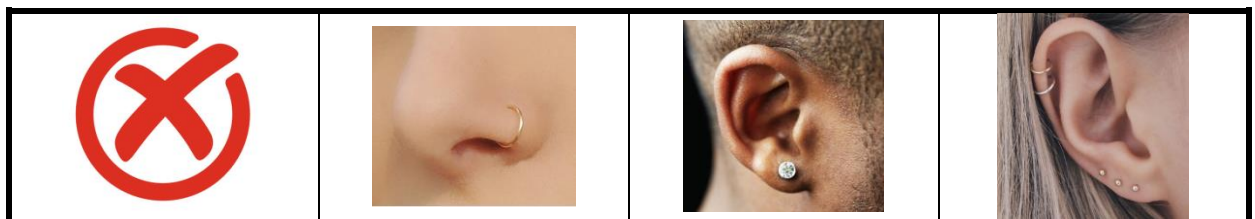
Haircuts/Styles

As a school we promote traditional uniform and therefore traditional hair styles. Any student with hair style deemed unacceptable by the Principal, will be required to change it. Extremes of any style are not permitted; therefore, hair colourings should only be **natural**, and **lines or patterns** cut into hair are **not permitted** (this includes eyebrows). **Full or partially shaved hair is not appropriate for school** (therefore bald/skin fades are not permitted).



Piercings

If students have pierced ears, **one small plain (up 4mm) stud (no stones or gems)** may be worn in each ear lobe. No other facial or body piercings are permitted – **including the use of clear piercings**. For health and safety reasons, students will be expected to remove studs for PE, so will need to consider this when planning to get their ears pierced.



Jewellery

No other jewellery (to include bracelets, chains, rings and necklaces) are allowed and will be **confiscated if worn**. They will be kept by the Principals PA.



Make up and Nails

Make-up must be discreet and natural looking. If make-up is deemed to be excessive, then students will be told to remove it. **False eyelashes are not allowed** and will need removing immediately. **False, varnished, acrylic, gel or shellac nails are not allowed and will need removing immediately**. Tattoos (permanent or semi-permanent) are not permitted.



Uniform Standards – Only to be Used as a Guideline

Ensuring that the correct standards of uniform are adhered to is not always the easiest of tasks due to so many retail outlets offering such variation in the products that they provide. Retailers will often display stock as 'school wear' or 'back to school wear', but this does not necessarily mean that it meets the standards set out by Hagley Catholic High School. If parents/carers are unsure on any area of school uniform, then we encourage them to get in touch with school through the main switchboard. We will be more than happy to support with any query.

As a school community, we believe in fairness and consistency, so will always set the required standards against the expectations outlined within this policy. When challenged on uniform standards, students will often refer to what they perceive other students are wearing. This is never an acceptable excuse for not following the school rules and it will be reiterated that all students will be challenged if their uniform doesn't meet the expected standards.

The following simply references both positive and negative examples of specific variations associated with certain items of the Hagley Catholic High School uniform.

Skirts

A reminder that the school skirt needs to be **navy** and of **knee length**.

Lycra skirts and or skirts with a side slit are not permitted and therefore will be challenged.

So as to create the professional working environment that we aspire to at Hagley Catholic High School, it is imperative that the school skirt is worn to knee length. Students who don't follow this requirement, will be challenged, with the expectation of immediate change.



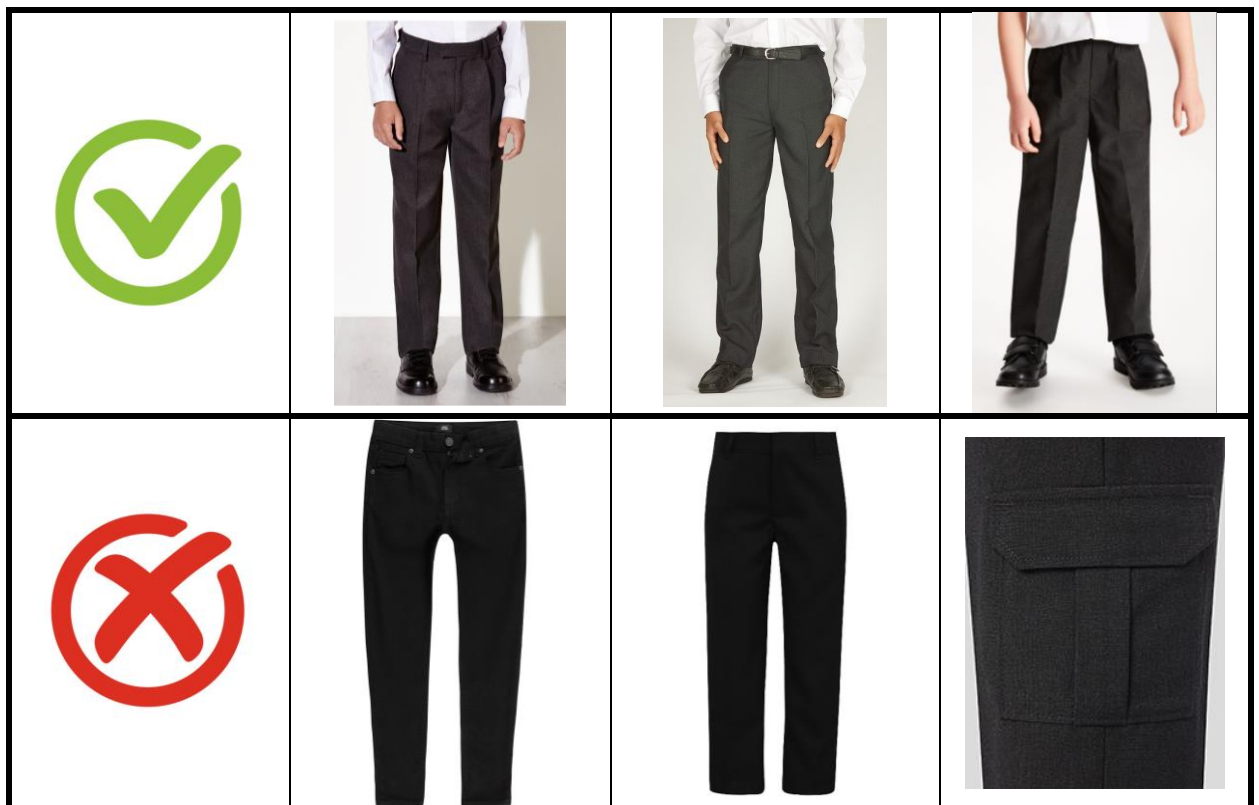
Girls Trousers

Girls Trousers must be mid-grey. Girls trousers must not be Lycra and must be worn with school standard shoes.



Boys Trousers

Boys trousers must be plain mid to dark grey, full-length tailored trousers. Boys trousers must not be jeans or chinos or black in colour.



Girls Shoes

Plain black low-heeled shoes only. Fashion shoes; boots; trainers; plimsolls; heeled shoes or sandals are **NOT** permitted and will be challenged.

Boys Shoes

Black lace up or slip on shoes only. Heavy boots; trainers; canvas pumps/plimsolls or sport brands are **NOT** permitted.

Outerwear – Coats

Any coat or outerwear must be a plain dark colour with no colour deviations – preferably navy or black. Denim; combat or striped sports coats and or jackets are not permitted. Under no circumstances are 'hoodies' to be worn either over or under the school blazer. All hoods attached to coats, **MUST** be taken down when entering the school building.



Miscellaneous

Plain navy blue or black opaque **tights** are to be worn in addition to the wearing of a knee length skirt. No socks are to be worn either under or over the tights.

Students who choose to wear a **belt**, must only wear a plain black one, with no studs or additional fashion accessories.

Hats, scarves and **gloves** must be in keeping with the school uniform colours, so must be either school specific (scarf) or plain black or navy. Any alternatives will be challenged. Hats/scarves and gloves must be removed when entering the school building.



PE Kit

PE kit can be ordered by completing an order form, which are available from the main school reception.

The PE department request that **ALL** items of kit are **embroidered** with the student's full name. Items such as football boots, shin pads, leggings etc. do not have to be a specified brand and can be purchased from most sports shops.